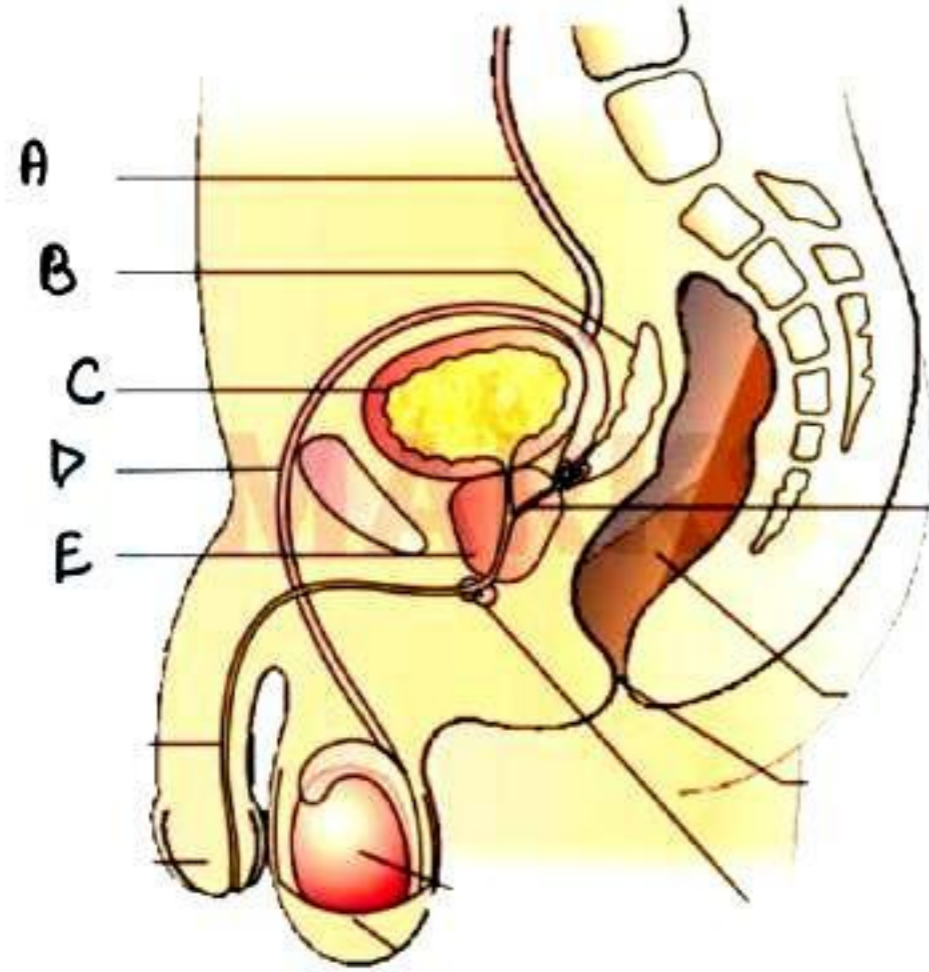


Human Reproduction

Set – 1

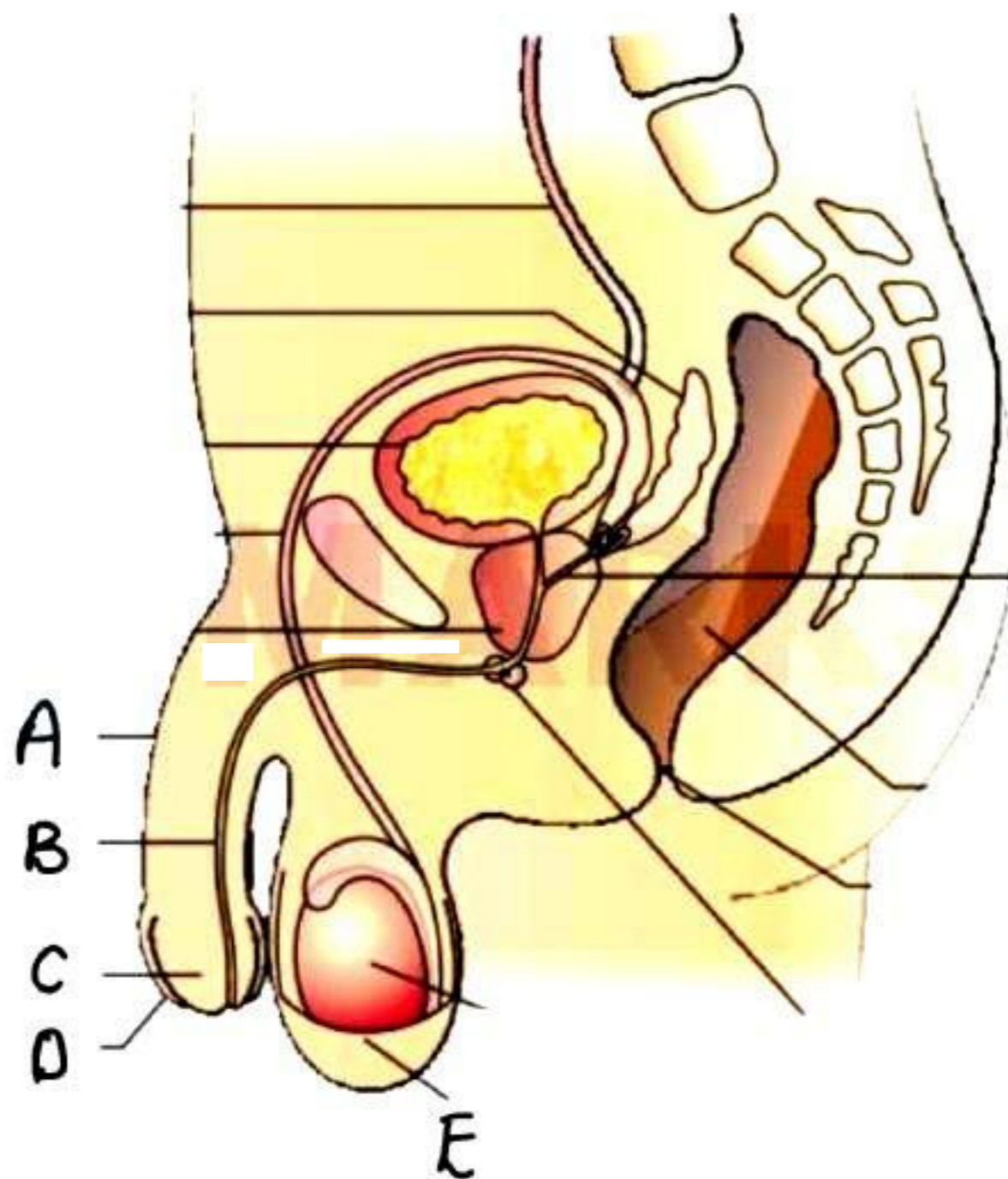
Q1. Select A, B, C, D, E from the following diagram.



- A. Ureter, Seminal Vesicle, Bladder, Vas deferens, Prostate
- B. Urethra, Seminal Vesicle, Bladder, Vas deferens, Prostate
- C. Ureter, Seminal Vesicle, Bladder, Vas deferens, Testis
- D. Ureter, Seminal Vesicle, Bladder, Vas deferens, Bulbourethral

Ans. (A)

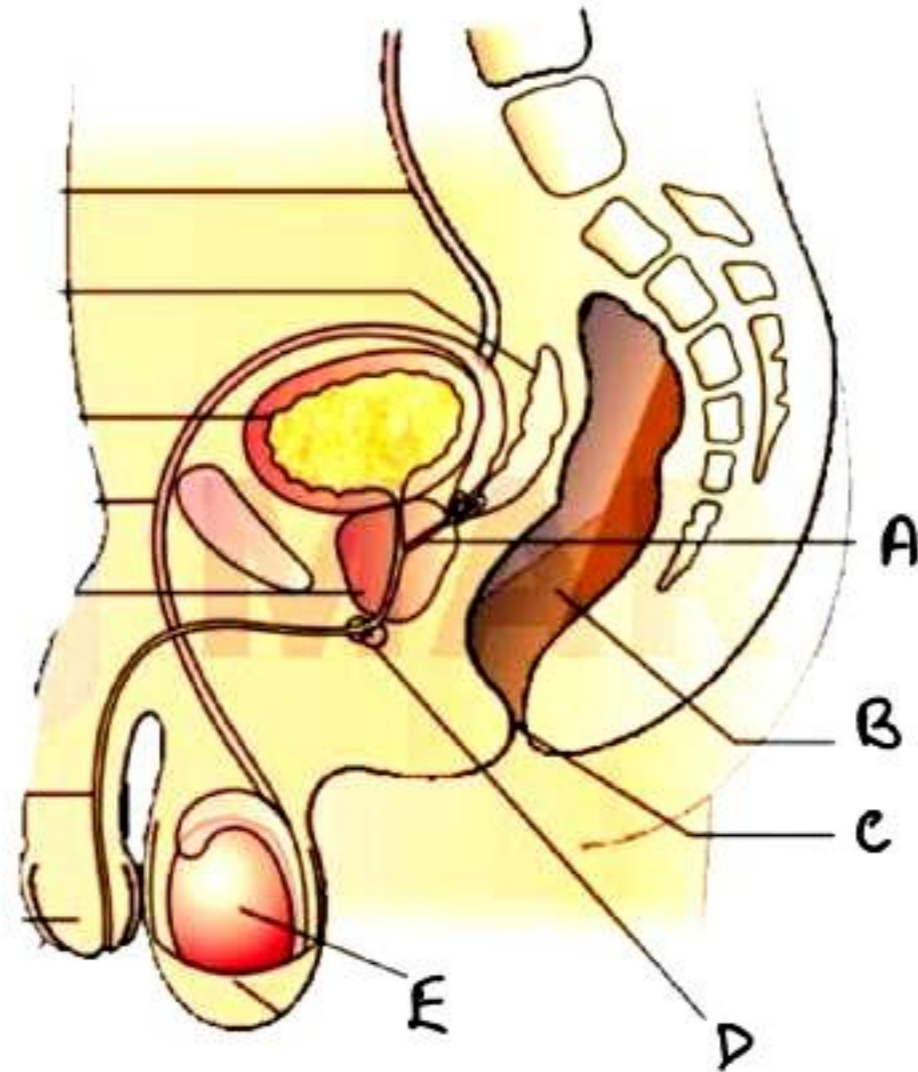
Q2. Select A, B, C, D, E from the following diagram.



- A. Glans Penis, Foreskin, Urethra, Penis, Testis
- B. Penis, Urethra, Glans Penis, Foreskin, Scrotum
- C. Glans Penis, Foreskin, Urethra, Penis, Scrotum
- D. Penis, Urethra, Glans Penis, Foreskin, Testis

Ans. (C)

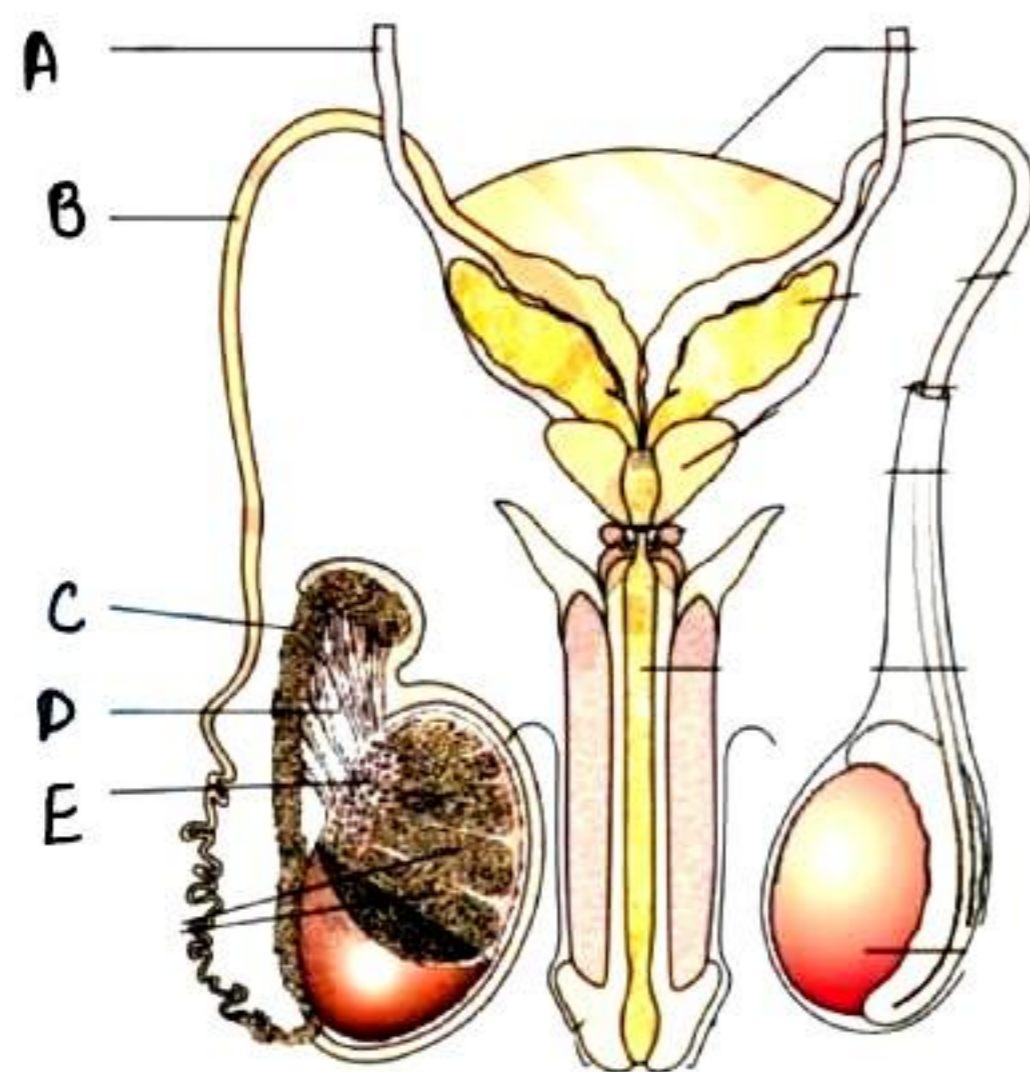
Q3. Select A, B, C, D, E from the following diagram.



- A. Ejaculatory Duct, Bladder, Anus, Prostate, Testis
- B. Ejaculatory Duct, Rectum, Anus, Prostate, Testis
- C. Ejaculatory Duct, Bladder, Anus, Bulbourethral gland, Testis
- D. Ejaculatory Duct, Rectum, Anus, Bulbourethral gland, Testis

Ans. (D)

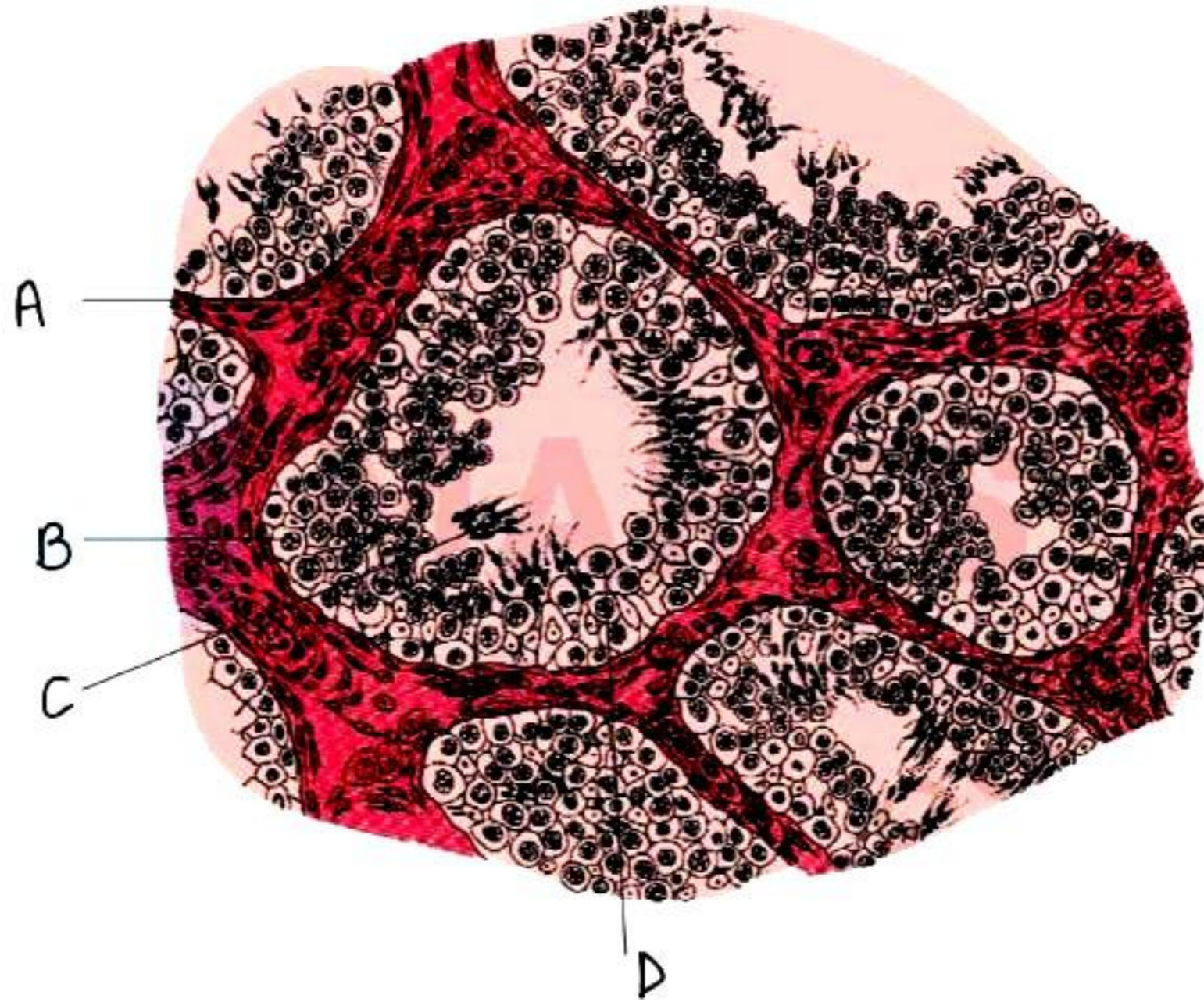
Q4. Select A, B, C, D, E from the following diagram.



- A. Urethra, Ureter, Epididymis, Vas Deferens, Rete Testis
- B. Ureter, Vas Deferens, Epididymis, Vasa Efferentia, Rete Testis
- C. Ureter, Vas Deferens, Epididymis, Vasa Efferentia, Urethra
- D. None of the above

Ans. (B)

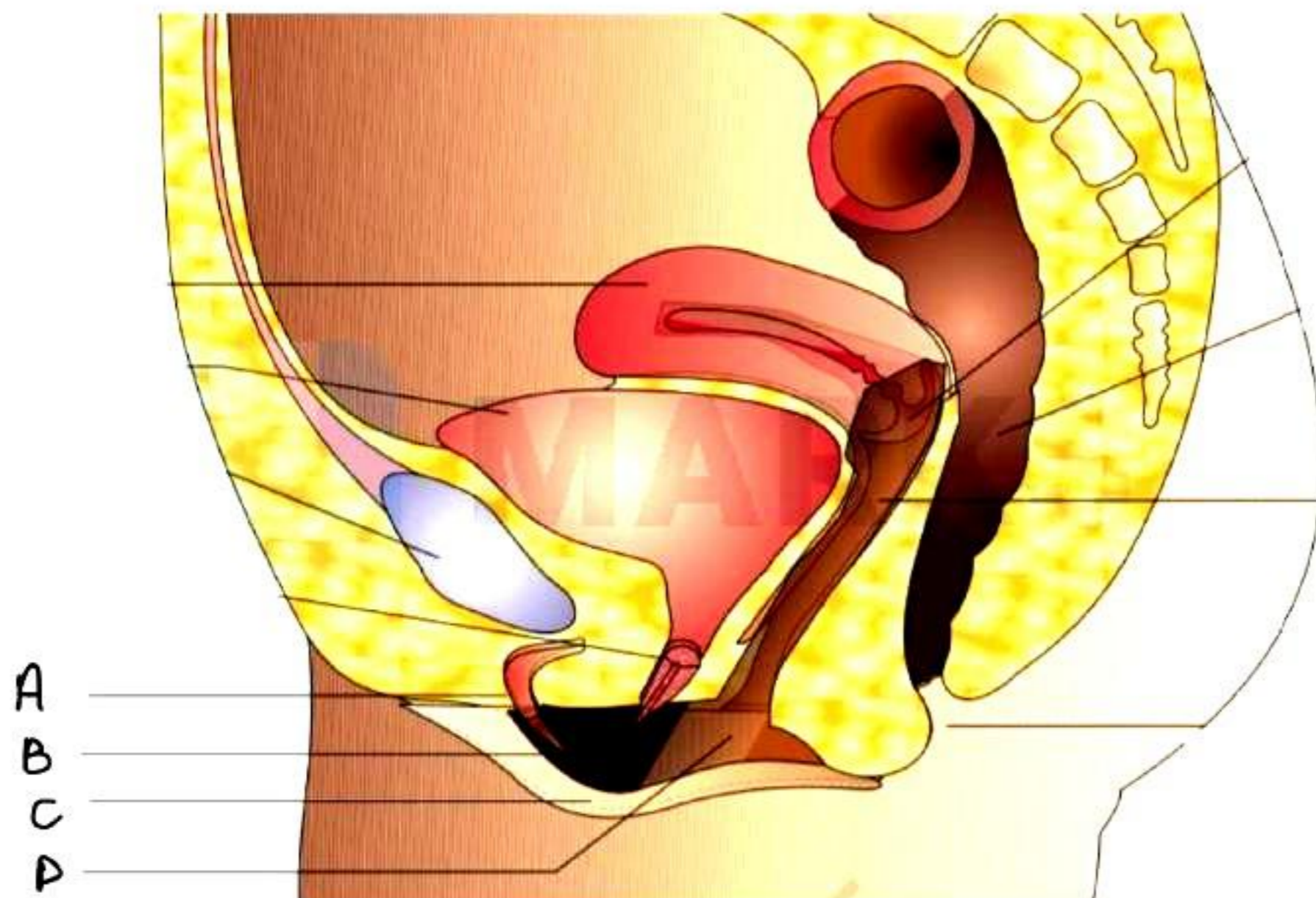
Q5. Select A, B, C, D from the following diagram.



- A. Interstitial Cells, Spermatogonia, Spermatozoa, Sertoli Cells
- B. Spermatogonia, Spermatozoa, Sertoli Cells, Interstitial Cells
- C. Spermatozoa, Spermatogonia, Sertoli Cells, Interstitial Cells
- D. None of the above

Ans. (A)

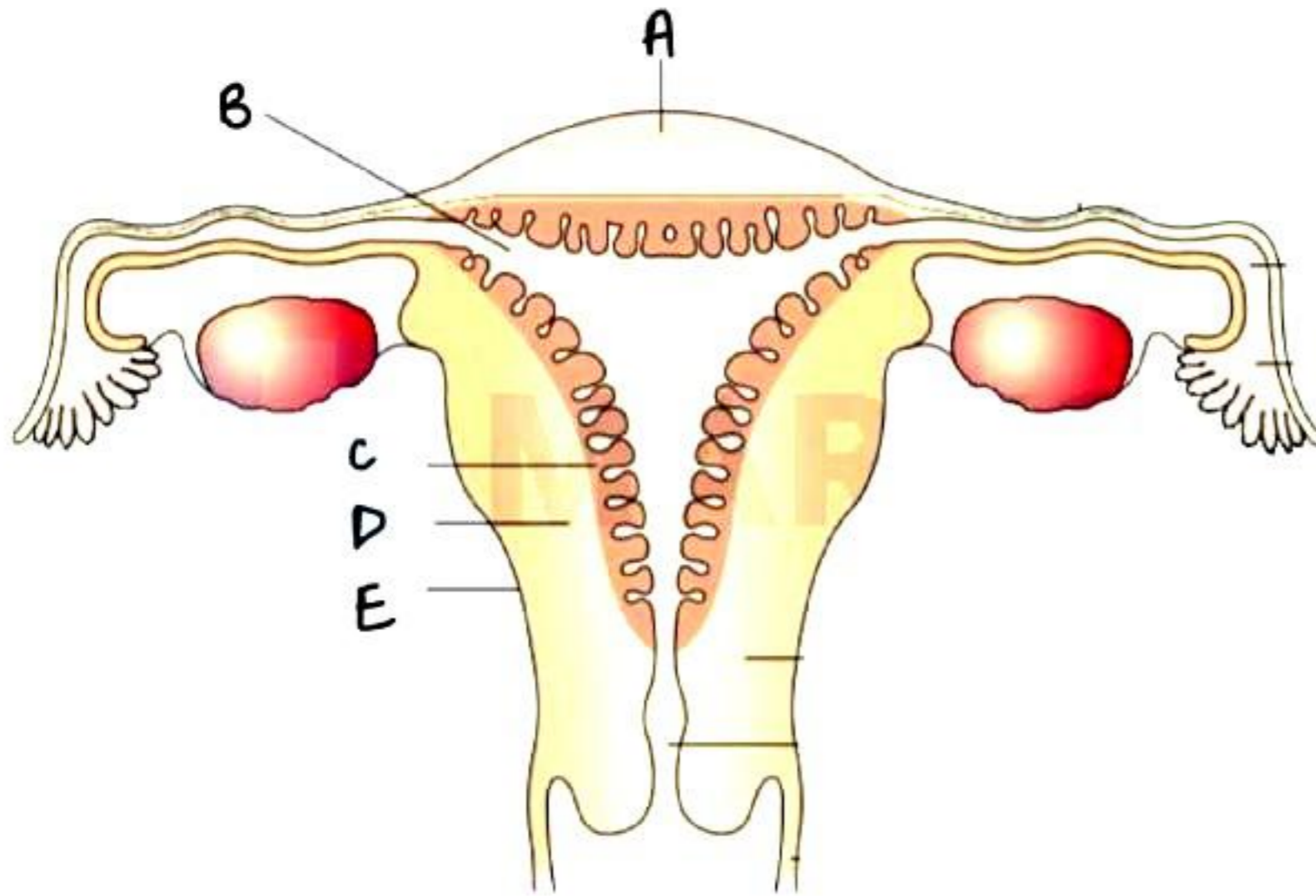
Q6. Select A, B, C, D from the following diagram.



- A. Clitoris, Labia Majora, Labia Minora, Vaginal Orifice
- B. Labia Majora, Labia Minora, Clitoris, Vaginal Orifice
- C. Clitoris, Labia minora, Labia majora, Vaginal Orifice
- D. Urethra, Labia minora, Labia majora, Vaginal Orifice

Ans. (C)

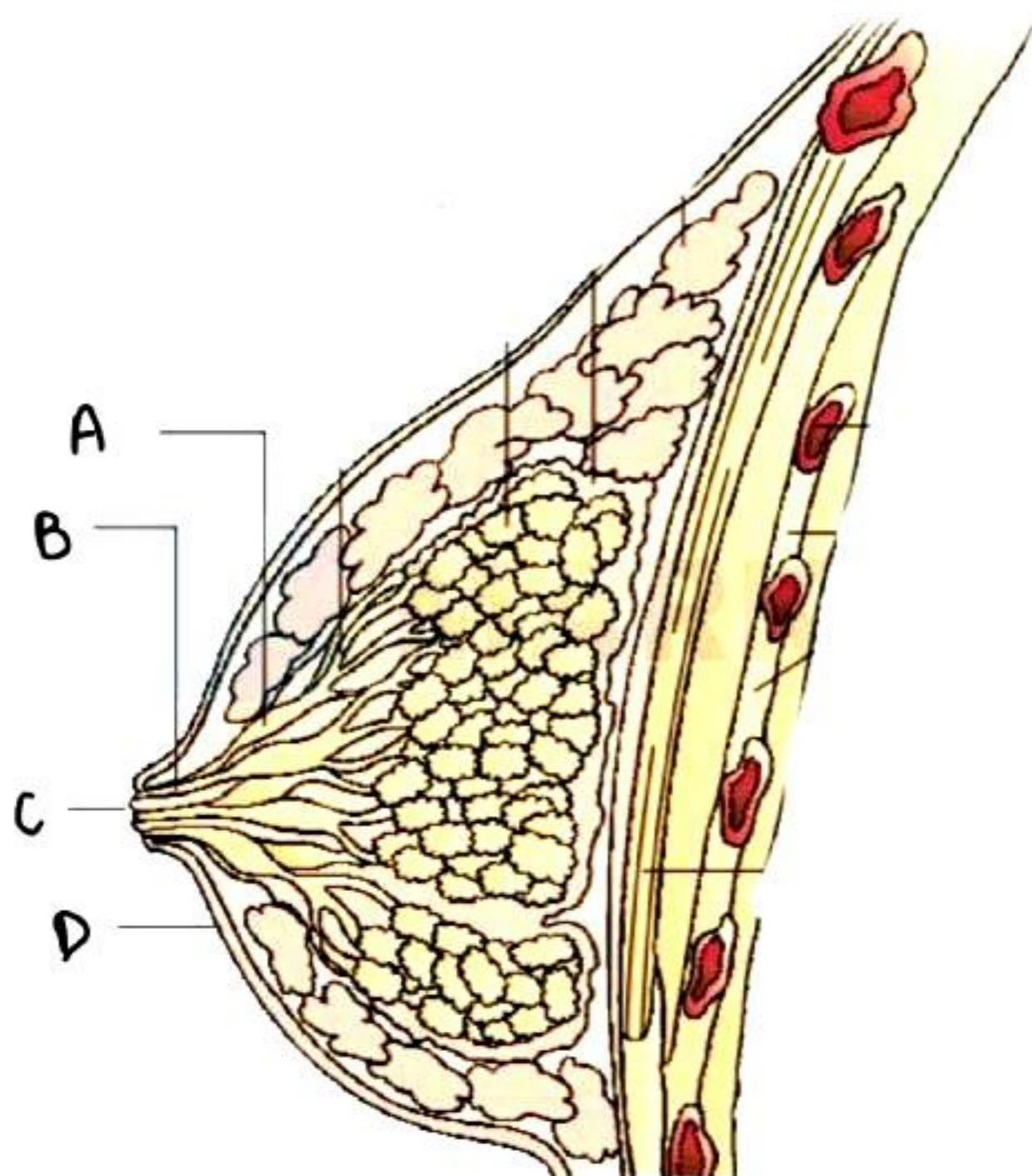
Q7. Select A, B, C, D, E from the following diagram.



- A. Fundus, Uterine Cavity, Endometrium, Myometrium, Perimetrium
- B. Uterine Cavity, Endometrium, Myometrium, Perimetrium, Fundus
- C. Fundus, Uterine Cavity, Endometrium, Myometrium, Urimetrium
- D. Fundus, Uterine Cavity, Exometrium, Myometrium, Perimetrium

Ans. (A)

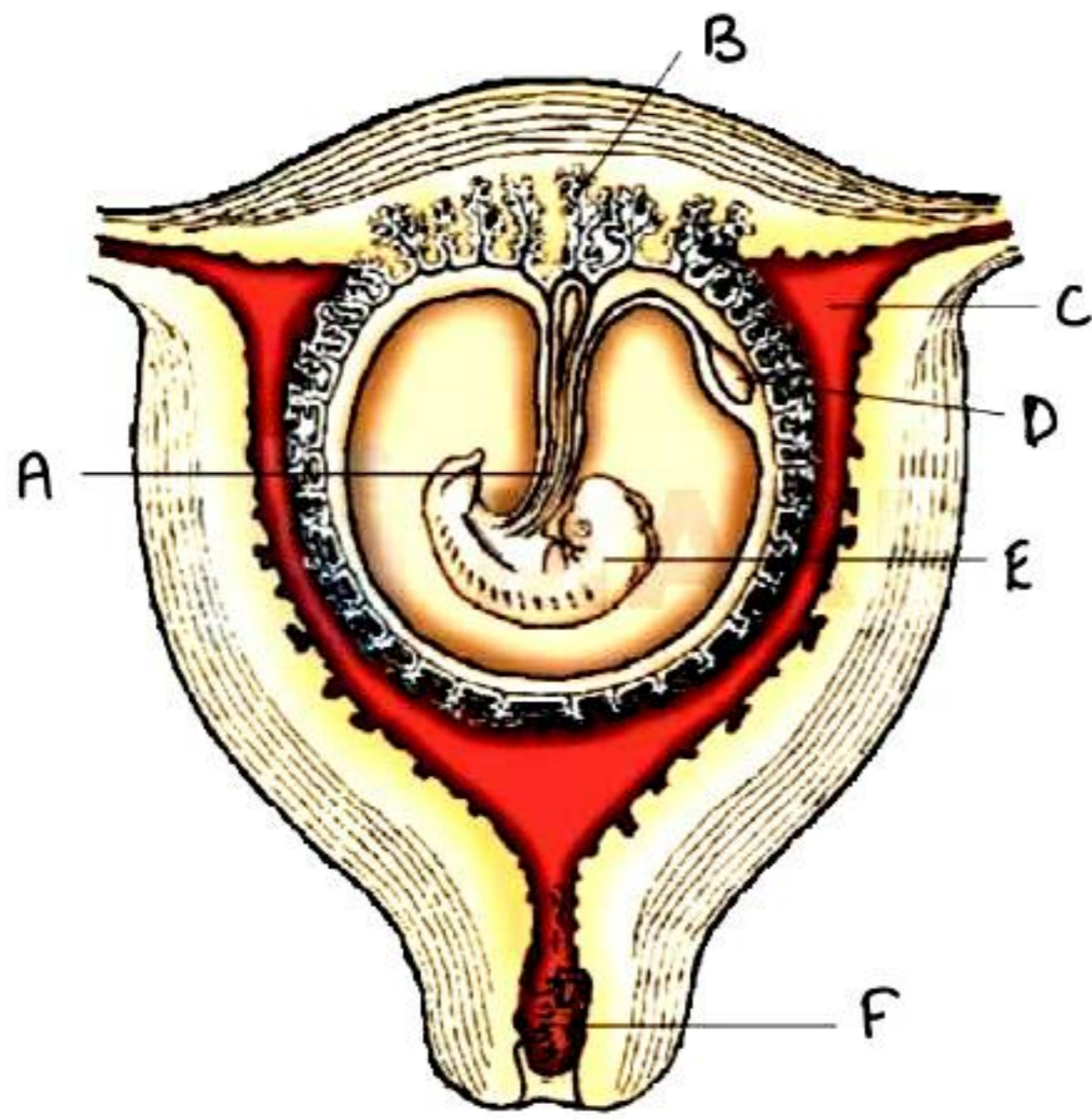
Q8. Select A, B, C, D from the following diagram.



- A. Ampulla, Lactiferous duct, Nipple, Areola
- B. Ampulla, Lactiferous duct, Nipple, Lobe
- C. Lobe, Lactiferous duct, Nipple, Areola
- D. Ampulla, Lactiferous duct, Nipple, Fat

Ans. (A)

Q9. Select A, B, C, D, E and F from the following diagram.



- A. Umbilical Cord, Villi, Cavity, Yolk Sac, Embryo, Mucus Plug
- B. Umbilical Cord, Villi, Cavity, Yolk Sac, Embryo, Cervix
- C. Umbilical Cord, Villi, Uterus, Yolk Sac, Embryo, Mucus Plug
- D. Umbilical Cord, Villi, Cavity, Yolk Sac, Fetus, Mucus Plug

Ans. (B)